

NATURE REGENERATION TEAM EXPERIENCES

INFORMATION PACK



“It was great to spend the day out in reserve, and doing something meaningful for the local community. For our team, the local community was not the only beneficiary. The team really enjoyed being away from the monitors and learning about new things such as water clarity, water quality, weed identification and control. These benefits are indirect and not quantifiable, and I think the event has much more to offer than its face value.” - Auckland System Management





OVERVIEW

Join PFK in the beautiful local reserves of Kaipātiki as we rescue native trees from invasive weeds and prepare planting sites. Our working bee is both enjoyable and fulfilling, offering a fantastic opportunity to give back to our environment

With the flexibility of half-day and full-day sessions, teams can actively participate in these conservation activities while strengthening bonds and fostering a sense of purpose and responsibility towards the environment.

Our extensive experience in organizing events for businesses will ensure everyone goes home with a sense of accomplishment, knowing they have made a positive impact on the environment.

BENEFITS TO YOUR TEAM

PEOPLE

Spending time in nature gives your employees fantastic health benefits for both body and mind. We often refer to our working bee as the "Green Gym" because after these sessions, participants feel like they've completed a rewarding workout with a great sense of achievement.

EASY FOR YOU

PFK will take the strain off organising your volunteering day, making it easy for you by providing the equipment, expertise and organisation necessary to enjoy a relaxing and low-stress volunteer day.

BRAND EXPOSURE

Bring your comms specialist and your camera! Here is a great opportunity to let your stakeholders know about the wonderful community and environmental contributions that your business makes.



2498



2.7K



1039



3,654

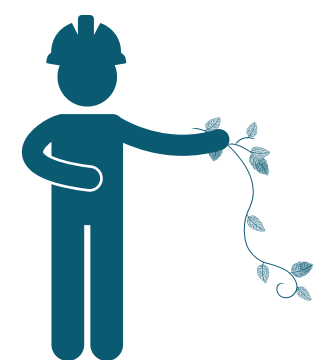
ACHIEVE SUSTAINABLE DEVELOPMENT GOALS

Pest Free Kaipatiki's Team Experiences for Nature directly targets several of the United Nations recognised Sustainable Development Goals. Which goals resound with your business?





ON THE DAY



ARRIVAL

Our knowledgeable team member will introduce you to the local environment, explain the tasks ahead and cover the necessary Health and Safety.



WORKING BEE

You are now fully equipped and ready to dive into a hands-on working bee to give the bush much needed T.L.C and save native trees from being smothered by invasive pest plants.



BREAK

Time for a snack break. Recharge your batteries, and let's reconvene soon.



WRAP UP

We will conclude the event with a group photo and social time to celebrate the great mahi we've done together.



PACKAGES

We have **two package options**. If you have groups of more than 30 people or fewer than 5 people, feel free to get in touch with us, and we'll be happy to create the right package for you.

Program	Duration	Group Size	Investments*
Half- day	4 hours	5 - 15 people	\$950
		16 -30 people	\$1400
Full- day	6 hours	5 - 15 people	\$1500
		16 -30 people	\$2050

**Costs contribute to staff facilitation, event trailer, resources and tools for activities*

Add-ons are available:

- BBQ or catered lunch
- Informative guided walk
- Team competition (Bio-Blitz)
- Return for tree planting / plant care on same site

WHY ARE WE DOING THIS?

WHAT ARE INVASIVE WEEDS OR PEST PLANTS?

Invasive weeds have become a leading cause of extinction worldwide, and Biosecurity NZ has classified them as undesirable organisms. The impact is particularly severe in New Zealand due to its unique natural history and extended isolation.

WHY ARE THEY BAD?

The majority of these species grow rapidly and produce a large number of seeds, allowing them to quickly dominate natural ecosystems and outcompete native plants. This reduces the availability of natural food and habitat for our native birds, lizards and insects, leaving a negative impact on the ecosystem.

WON'T THE WEED REGROW AFTER WE REMOVE THEM?

After the removal, PFK volunteers will continue to restore the area by planting native trees, recreating a natural habitat for our native birds, bats, insects and lizards, but none of this is possible without your prior work.

Removing invasive weeds is important and requires as many hands on deck as possible. It is also highly rewarding to do, and volunteers are often surprised by how satisfying it is to remove them. Every weed removed is a win for the environment.

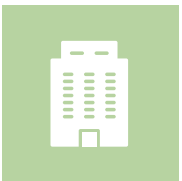


“THANKS SO MUCH FOR HELPING US TO ORGANISE THE VOLUNTEER DAY ON WEDNESDAY. THE TEAM HAD A GREAT TIME AND WE ARE KEEN TO CONTINUE TO BE INVOLVED TO SEE THE PROJECTS AND ORGANISATION EVOLVE!” – LAUREN, XERO

**“THANK YOU SO MUCH FOR HOSTING US YESTERDAY, WE ALL HAD SUCH A GOOD TIME AND HOPE THAT WE MADE A DENT IN SOME OF THE MANY TASKS YOU HAVE!”
– KELLY, BNZ TEAM**

“I LEARNT QUITE A BIT ABOUT PLANTING AND THE DIFFERENT PLANTS WHICH WAS AWESOME.” – RUCI, NAYLOR LOVE

MORE INFO ? CONTACT US



3 Ross Ave, Glenfield



volunteers@pfk.org.nz



pfk.org.nz

Get in touch to discuss further details

Kia ora rawa atu to our supporters

